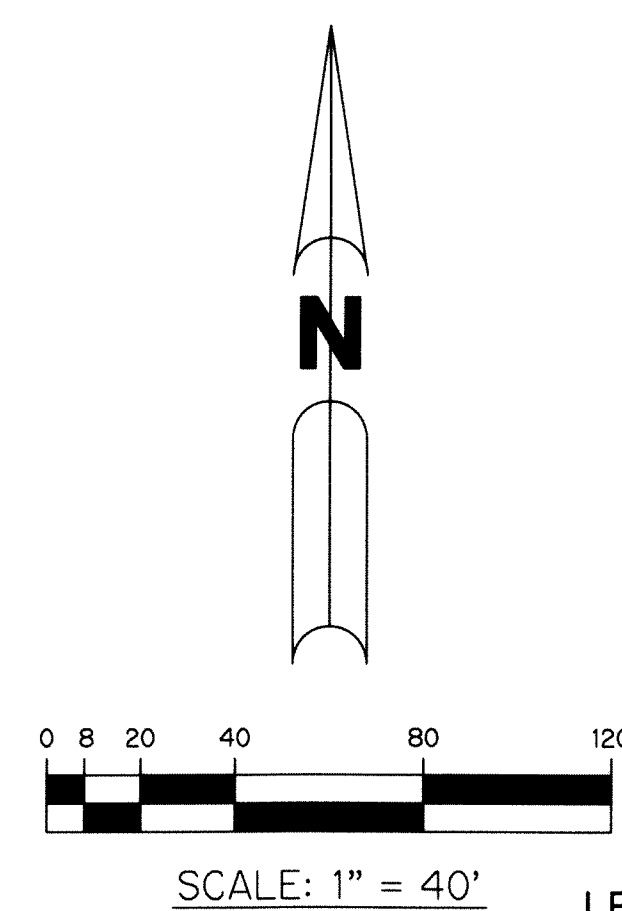


# POLO TRACE II PUD PLAT NO. 6

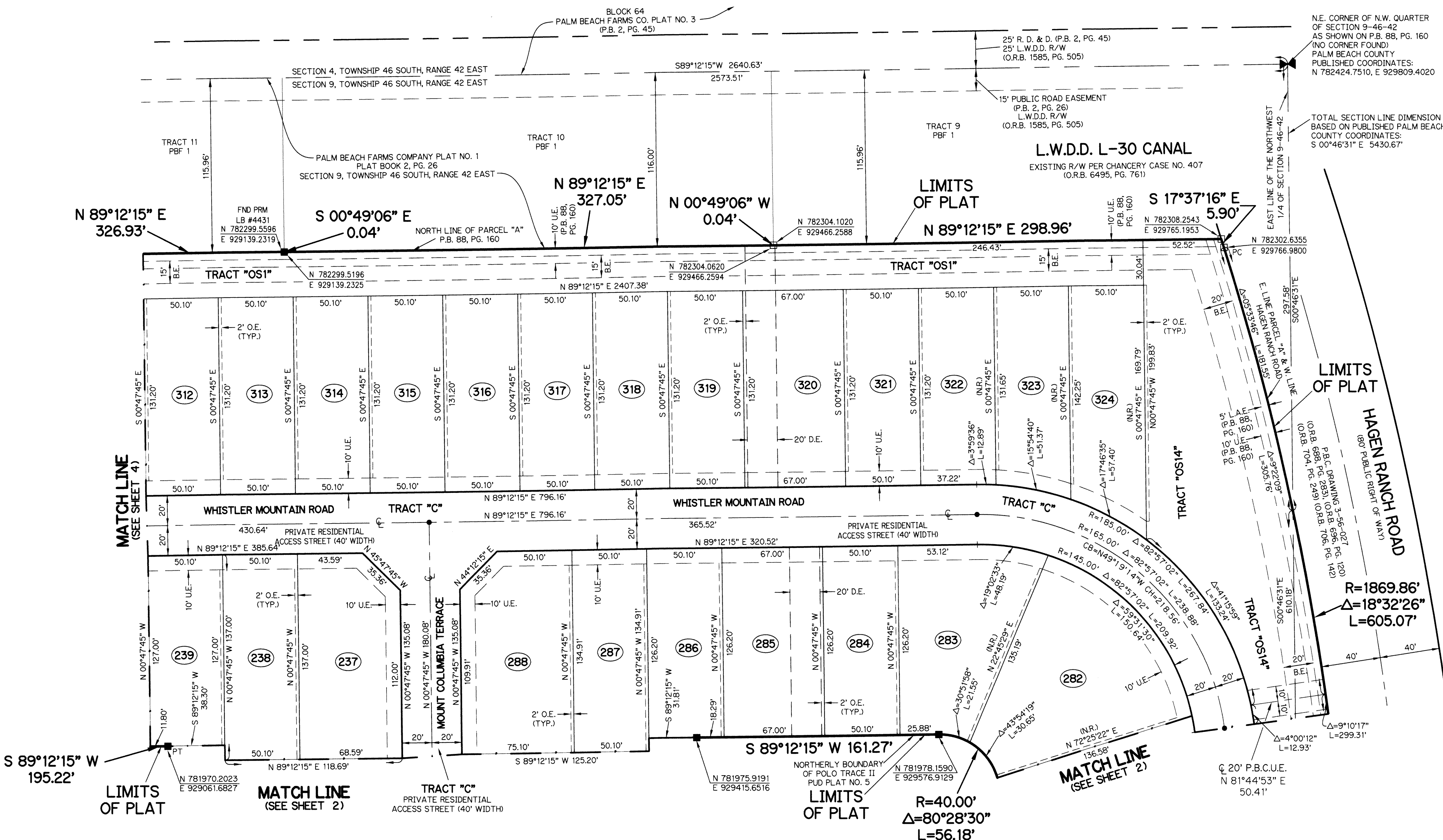
BEING A REPLAT OF A PORTION OF PARCEL "A" ACCORDING TO POLO TRACE II GOLF COURSE, AS RECORDED IN PLAT BOOK 88, PAGES 160 THROUGH 170 OF THE PUBLIC RECORDS OF PALM BEACH COUNTY, FLORIDA, LYING IN SECTION 9, TOWNSHIP 46 SOUTH, RANGE 42 EAST, PALM BEACH COUNTY, FLORIDA

SHEET 3 OF 10

199

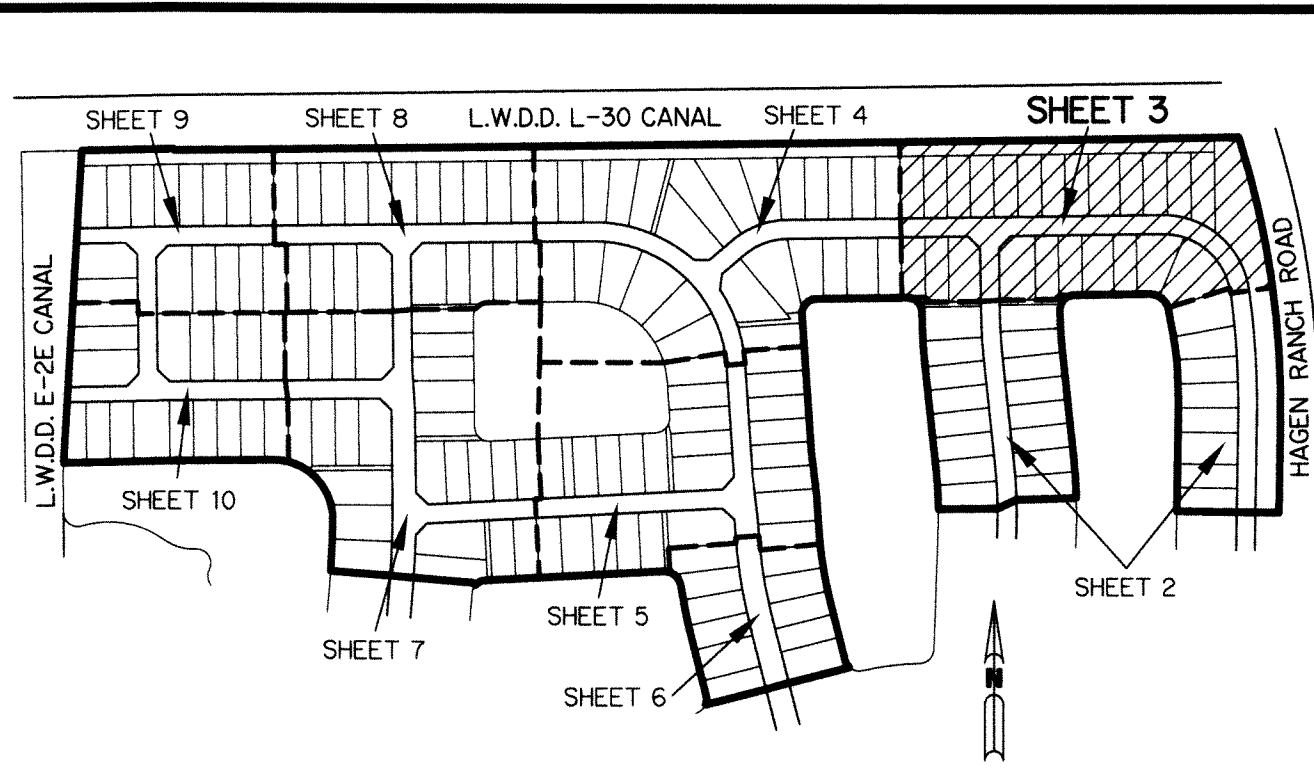


NOTE: SEE DETAIL OF NORTH BOUNDARY LINE ON SHEET 8



- LEGEND:**
- - SET PERMANENT REFERENCE MONUMENT 4"x4" CONCRETE MONUMENT WITH 1.5" DISK STAMPED L.B. #7741 (UNLESS OTHERWISE NOTED)
  - - FOUND PERMANENT REFERENCE MONUMENT 4"x4" CONCRETE MONUMENT WITH 1.5" DISK STAMPED L.B. #7741 (UNLESS OTHERWISE NOTED)
  - - SET PERMANENT CONTROL POINT NAIL WITH 1.25" DISK STAMPED L.B. #7741
  - - FOUND PERMANENT CONTROL POINT NAIL WITH 1.25" DISK STAMPED L.B. #7741
  - AGR - AGRICULTURAL
  - Δ - DELTA ANGLE
  - B.E. - BUFFER EASEMENT
  - BLK - BLOCK
  - CB - CHORD BEARING
  - CH - CHORD DISTANCE
  - C - CENTERLINE
  - D.B. - DEED BOOK
  - D.E. - PRIVATE DRAINAGE EASEMENT
  - FND - FOUND
  - I.E. - IRRIGATION EASEMENT
  - IRC - 5/8" IRON ROD & CAP STAMPED P.R.M. L.B. #7741
  - L - ARC LENGTH
  - L.A.E. - LIMITED ACCESS EASEMENT
  - LB - LICENSED BUSINESS
  - L.M.A.E. - LAKE MAINTENANCE ACCESS EASEMENT
  - L.M.E. - LAKE MAINTENANCE EASEMENT
  - L.W.D.D. - LAKE WORTH DRAINAGE DISTRICT
  - NO. - NUMBER
  - N.R. - NOT RADIAL
  - N.T.S. - NOT TO SCALE
  - O.R.B. - OFFICIAL RECORD BOOK
  - O.E. - MAINTENANCE & ROOF OVERHANG EASEMENT
  - P.B.C.U.E. - PALM BEACH COUNTY UTILITY EASEMENT
  - P.B. - PLAT BOOK
  - PBF 1 - PALM BEACH FARMS COMPANY PLAT NO. 1
  - PCC - POINT OF CURVATURE
  - P.C.P. - PERMANENT CONTROL POINT
  - P.D.E. - PUBLIC DRAINAGE EASEMENT
  - PG - PAGE
  - PGS - PAGES
  - P.O.B. - POINT OF BEGINNING
  - P.O.C. - POINT OF COMMENCEMENT
  - PCC - POINT OF COMPOUND CURVATURE
  - P.I. - POINT OF INTERSECTION
  - PRC - POINT OF REVERSE CURVATURE
  - PRM - PERMANENT REFERENCE MONUMENT
  - P.S.M. - PROFESSIONAL SURVEYOR AND MAPPER
  - PT - POINT OF TANGENCY
  - P.U.D. - PLANNED UNIT DEVELOPMENT
  - R - RADIUS
  - RAD - RADIAL
  - R/W - RIGHT-OF-WAY
  - S.E. - SIDEWALK EASEMENT
  - S.T. - SURVEY TIE
  - R. D. & D. - ROAD, DYKE AND DITCH RESERVATION
  - TYP. - TYPICAL
  - U.E. - UTILITY EASEMENT
- SECTION 9-46-42 - SECTION 9, TOWNSHIP 46 SOUTH, RANGE 42 EAST  
 N 779831.1470  
 E 928508.7520 - STATE PLANE COORDINATE VALUE

**NOTE:**  
 COORDINATES SHOWN ARE GRID COORDINATES DATUM = NAD 83 (1990 ADJUSTMENT)  
 ZONE = FLORIDA EAST ZONE  
 LINEAR UNIT = U.S. SURVEY FEET  
 COORDINATE SYSTEM = 1983 STATE PLANE TRANSVERSE MERCATOR PROJECTION  
 ALL DISTANCES ARE GROUND  
 SCALE FACTOR = 1.0000258  
 PLAT BEARING = GRID BEARING  
 GROUND DISTANCE X SCALE FACTOR = GRID DISTANCE



**KEY MAP**  
N.T.S.

THIS INSTRUMENT WAS PREPARED BY  
 PERRY C. WHITE, P.S.M. 4213, STATE OF FLORIDA  
 SAND & HILLS SURVEYING, INC.  
 8461 LAKE WORTH ROAD, SUITE 410  
 LAKE WORTH, FLORIDA 33467  
 LB-7741